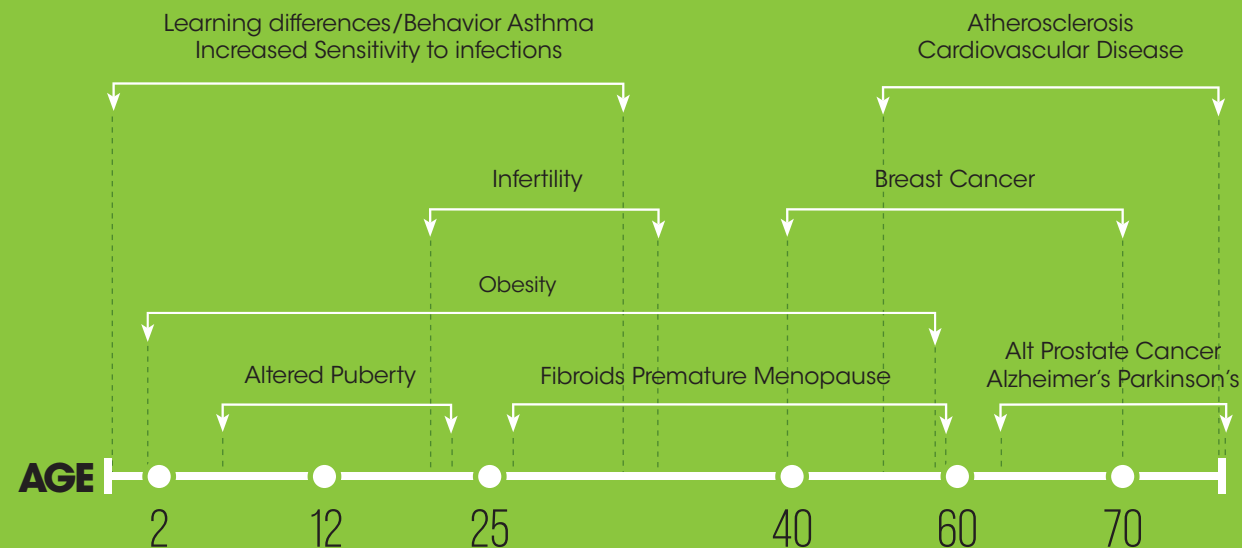


Developmental Exposure



Examples of EDC Routes of Exposures In Humans

EDC EXAMPLE(S)	WHERE THE EDCS COME FROM	HOW WE ARE EXPOSED TO EDCS
PCBs, dioxins, perfluorinated compounds, DDT	Industrial waste or pesticides contaminating soil or ground water	Oral consumption of contaminated food or water
BPA, phthalates, chlorpyrifos, DDT	Leaching of chemicals from food or beverage containers; pesticide residues in food or beverage	Oral consumption of contaminated food or water
BFRs	Household furniture treated with flame retardants	Contact with skin and/ or inhalation
DOT, chlorpyrifos, vinclozolin, pyrethroids	Pesticides used in agriculture, homes, or for public disease vector control	Contact with skin and/ or inhalation
Phthalates	Intravenous tubing	Intravenous
Phthalates, triclosan, Parabens, insect repellants	Some cosmetics, personal care products, anti-bacterials, sunscreens, medications	Application to skin
Numerous EDCs can cross placenta	Maternal body burden due to prior/current exposures	Bio logical transfer from the placenta
Numerous EDCs are detected in milk	Maternal body burden due to prior/current exposures	Biological transfer from mother's milk

Abbreviations: BFR: brominated flame retardant; BPA: bisphenol A; PCBs: polychlorinated biphenyls

Source: IPEN

H2 (Ground Floor),
Jungpura Extension,
New Delhi - 110014
India
Tel: 91-11-24328006, 24320711
Fax: 91-11-24321747

<https://www.facebook.com/toxiclink>



<https://twitter.com/toxiclink>



<https://www.youtube.com/user/toxiclink2012>



Toxics Link
for a toxics-free world

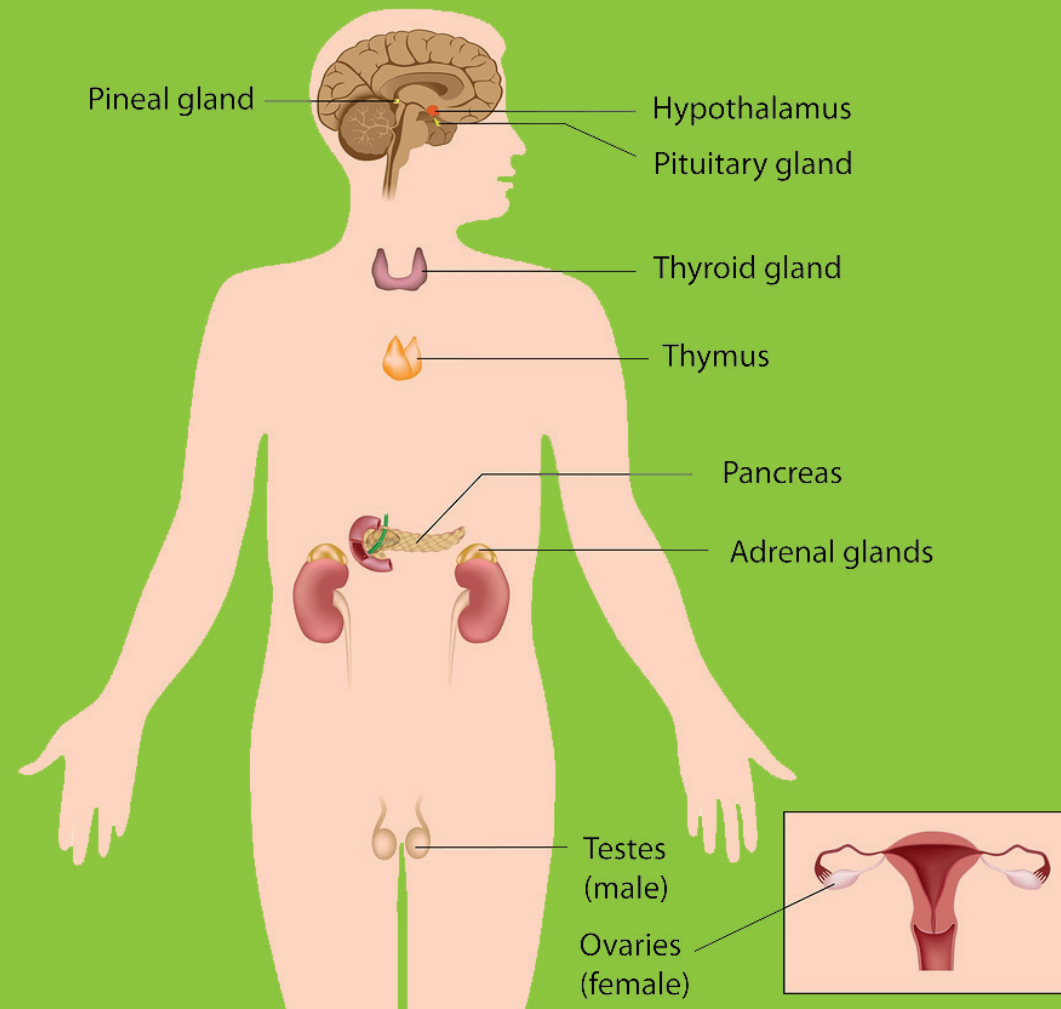
ENDOCRINE DISRUPTING CHEMICALS (EDCs)

Facts
You Should Know!

Endocrine Disrupting Chemicals

Endocrine disruptors are chemicals that may interfere with the **body's endocrine system** and produce adverse developmental, reproductive, neurological and immune effects in both humans and wildlife.

The Endocrine System*



* <http://www.livescience.com/26496-endocrine-system.html>

Impacts of EDCs

Reproductive/Endocrine

- Breast/prostate cancer
- Endometriosis
- Infertility
- Diabetes/metabolic syndrome
- Early Puberty
- Obesity

Immune/Autoimmune

- Susceptibility to infections
- Autoimmune disease

Pulmonocardiovascular

- Asthma
- Heart disease/hypertension
- Stroke

Brain/Nervous System

- Alzheimer's disease
- Parkinson's disease
- ADHS/learning disabilities

Source: WHO

